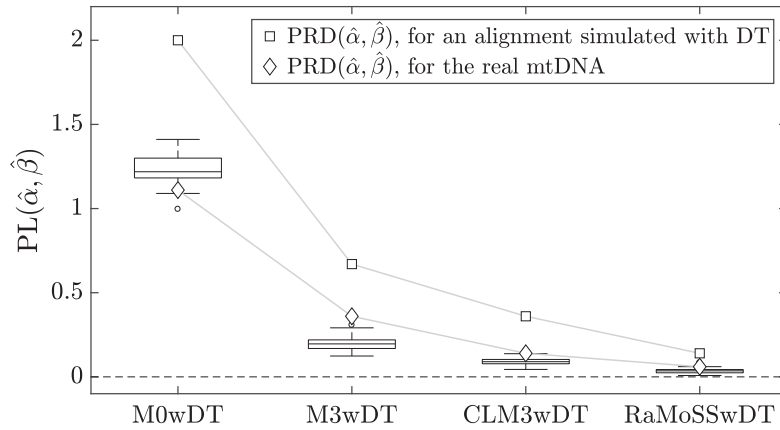
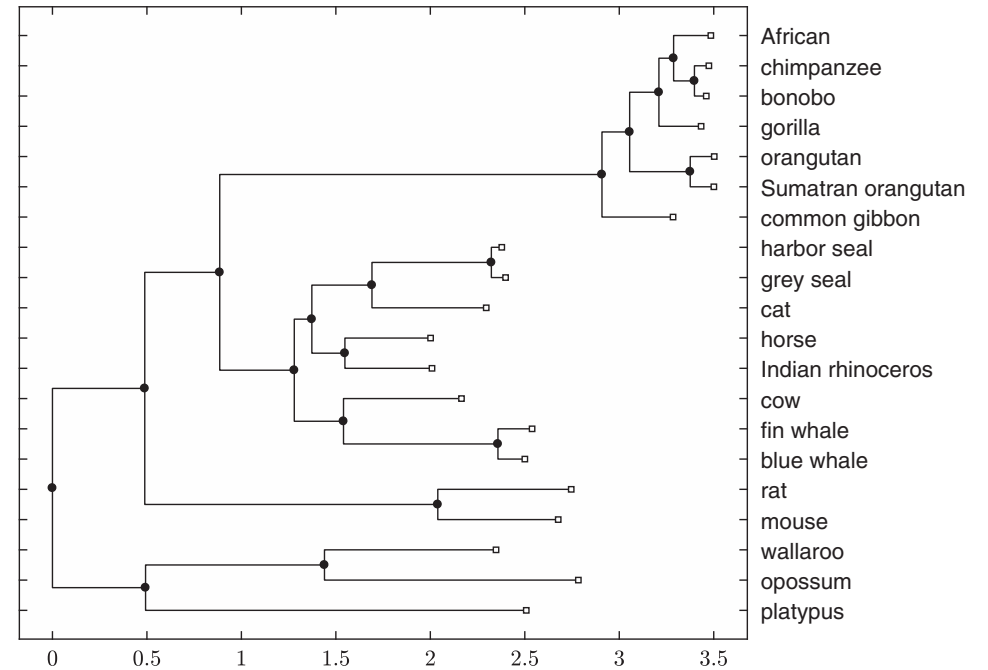


Phenomenological load



$$Q_{CLM3} = \frac{1}{r} \begin{bmatrix} Q_{\omega_0'} & 0 \\ 0 & Q_{\omega_1'} \end{bmatrix} + \frac{\delta}{c} \begin{bmatrix} -(1-p_0')l & (1-p_0')l \\ p_0'l & -p_0'l \end{bmatrix}$$



$$P(\text{switching} | x^h, \hat{\theta}_{\text{RaMoSS}}) = \frac{L_{CLM3}(x^h | \hat{\theta}_{CLM3}, T)(1 - \hat{p}_{M3})}{L_{M3}(x^h | \hat{\theta}_{M3}, T)\hat{p}_{M3} + L_{CLM3}(x^h | \hat{\theta}_{CLM3}, T)(1 - \hat{p}_{M3})}$$